



Use of sticky cards with GAT traps

When placing the sticky card for the first time, remove the protective pieces of paper from both sides (Figure 1) and place the card in the GAT by either hanging from a hook (Figure 2a) or inserting the card through the slots in the black funnel (Figure 2b).



Figure 1. Fresh sticky card with protective pieces of paper.

Keep these pieces of paper or a good sized piece of baking paper with your sampling kit, you will need those to collect the sticky card later.

When checking the trap remove the sticky card from the translucent chamber and search for any mosquito-like insects.

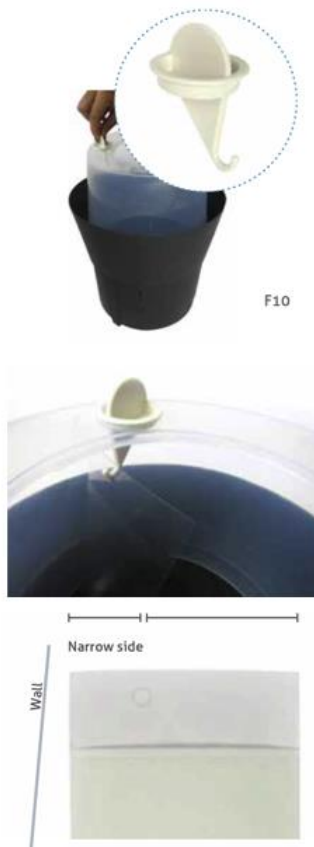


Figure 2a. GAT original model

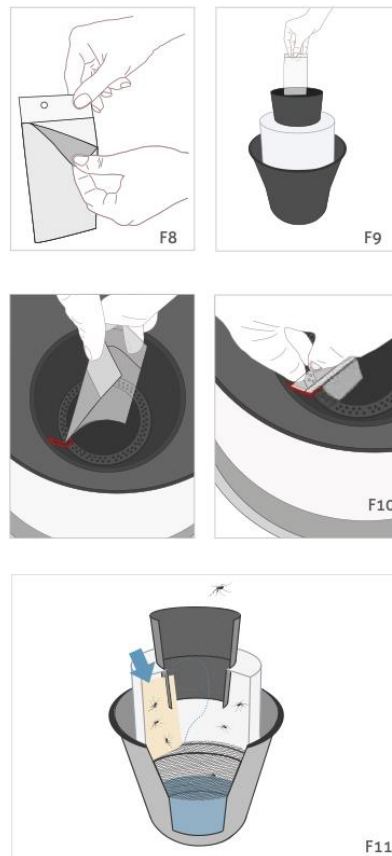


Figure 2b. Gat 2.





Take a photo of each suspected mosquito and send it to the lab for preliminary identification laboratory@smsl.co.nz

Use a permanent marker with an extra fine point to encircle the already photographed insects (Figure 3).



Figure 3a. Permanent marker

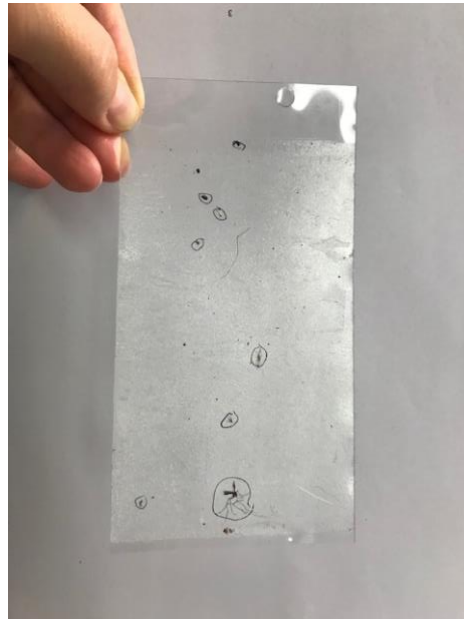


Figure 3b. Insect attached to a sticky card

If photo identification is not possible or the entomologist suspects the mosquito might be of exotic origin, the full sticky card must be sent to the laboratory. Depending on the circumstances you might need to send the sample via urgent courier (usually Sub60).

Each time the trap is checked a new sample must be created in the database. Samples with non-mosquitoes in them will be saved as negative.

This procedure can be repeated until the sticky card is full of insects or it has lost its adhesive properties.

Once the card is full or very dirty, use the original covers or a piece of baking paper to safely preserve the insects attached to the card and send the card to the lab.

If you need any more guidance on how to use a GAT or a GAT 2 check the instruction manuals here [GAT](#), [GAT 2](#).

